

Freshisle Fibers' Thoughts on Hermione's Fair Isle Scarf, Half Blood Prince

August 2009

There are four different colour patterns that appear in the scarf.

I'll call them A (blue circles), B (x's), C (green circles), and D (star).

My best guess from the pictures I've been able to find is that there are 8 full pattern repeats and then a partial repeat of A and B. The scarf ends do not match.

A B C D, A B C D, A B C D, A B C D, A B C D, A B C D, A B C D, A B C D, A B.

There are 58 rows to a full pattern repeat, 435 rows for 8 full pattern repeats and the partial. I believe the scarf is at least 60 inches long, more likely 72 inches.

A full round is 72 stitches and again, my best guess is that the scarf is about 4 ½ inches wide or 9 inches wide for a full round.

These measurements would make for a gauge of approximately 8 stitches/6 rows to 1 inch or 32 stitches/24 rows to 4 inches.

The colours have been harder to determine. I believe the background is white, but a white with a grey tone. The blue circles are a shade of royal blue. There is a camel brown and a purple. The darker colour has been the most difficult. I've debated about whether there is a black, a navy, and a green, but have finally decided that the darker colour might be all the same green. But, I think it is a tweedy green, possibly a two ply with one ply a dark green and the other a dark brown. Maybe. My best guess.

I'm more certain about the actual chart. I'm fairly confident that it matches the movie scarf pattern.

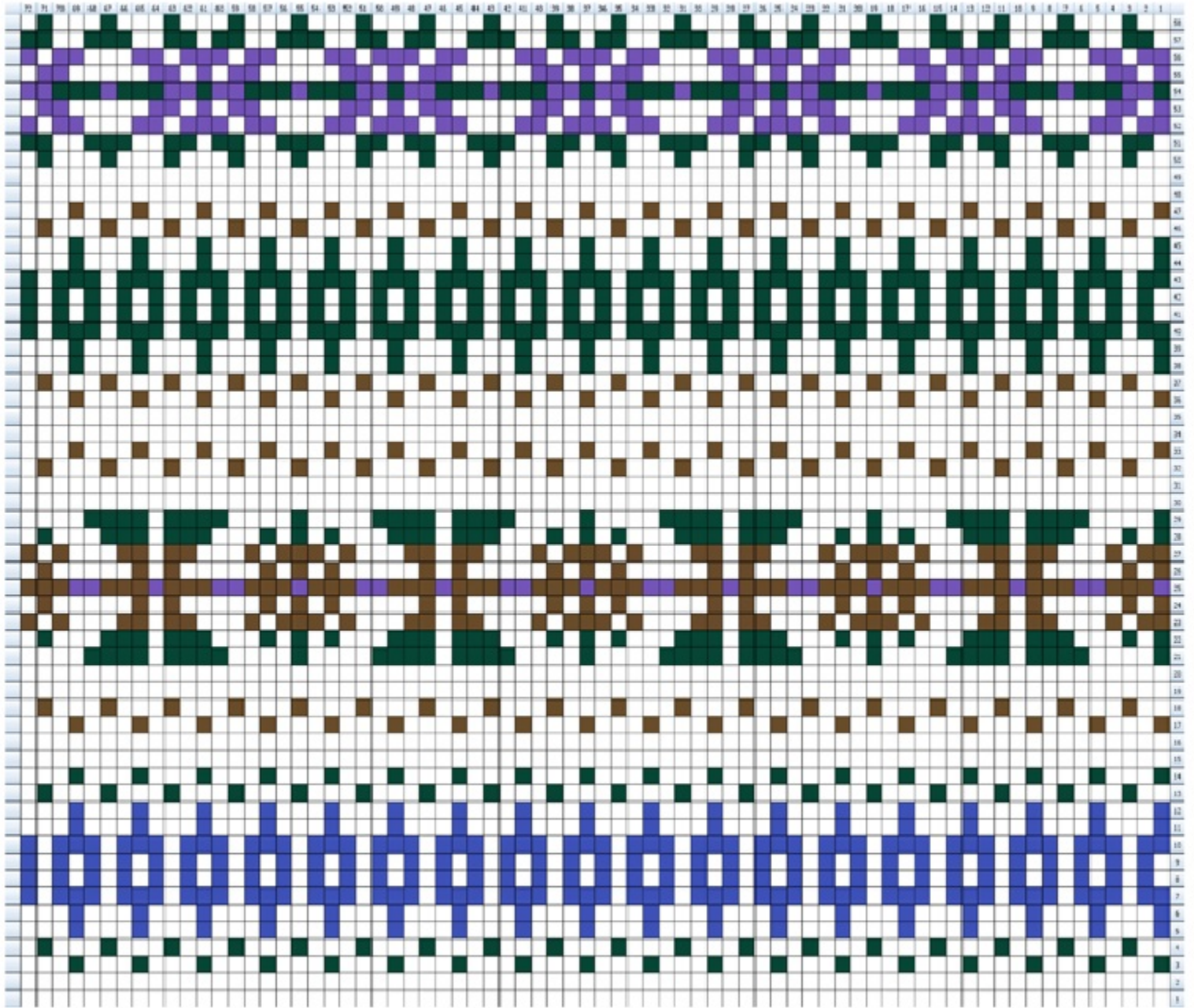
The scarf is knit in the round and the ends are seamed.

I've knit a number of swatches with various yarns and needle sizes and although some of them are close, I don't think any of them are exactly right. The swatching continues, the search for the perfect yarn continues.

Hopefully others will enjoy the chart.



Hermione's Fair Isle Scarf - Half Blood Prince



Notes:
Halter Neck
Fringe Flaps

Created by KristinLinn (www.kristinl.com)

More Thoughts - September 2009

I've received some questions since I published the chart and my swatches. I initially swatched with my own Freshisle Fibers Mixed Breed single ply and although I love the yarn, the colours weren't quite right. The next swatch was with my own Freshisle Fibers Suffolk wool and I felt the scarf was too thick. I tried Patons Classic Merino and thought it was too thick as well. The fourth swatch was with a combination of Patons Kroy and Baby Ull. I loved the result but the scarf was very narrow. I used a 3 mm needle and perhaps a larger needle would have been better for the fingering weight yarns.

Lastly, I dyed some of my own Mixed Breed single ply for more closely matching colours and started a new swatch/scarf. Using a 4mm circular needle, knit in the round, with a gauge of 6 stitches, 7 rows to 1 inch, I'm much happier with the result. I think that after blocking, this one will more resemble the movie scarf.

I've made these yarns available for purchase in [my shop](#).

I recently purchased some Jamieson's Double Knitting wool yarn (#122 Granite, #107 Mogit, #610 Purple, #292 Pine Forest, #684 Cobalt) and think they might make a wonderful Hermione Fair Isle scarf as well.



January 2010

My version of Hermione's Fair Isle scarf is completed.

It measures 72 inches long and 6 inches wide and was knit with our own Freshisle Fibers Mixed Breed single ply yarn using 4 mm needles.

I could not face weaving in the ends! so I knotted the ends and they will *stick* a bit to the inside with washing and hopefully not come through.

One end of the scarf was grafted with Kitchener stitch and the other was seamed with mattress stitch.



<http://www.freshislefibers.com>

August 2009